

PROTEUS DESIGN SUITE 8

We are pleased to announce that Proteus 8 is now in public Beta. You can obtain the new version through your Proteus 7 update manager but it will install alongside your copy of Proteus 7. You can therefore evaluate Proteus 8 whilst continuing to use Proteus 7 for production work. You will find detailed information on how to migrate from Proteus 7 to Proteus 8 in the Migration Guide. This is a help document which can be found under the 'Getting Started' section at the top left of the Proteus 8 Home Page - the screen that appears when you first launch Proteus 8.

New Features in Proteus 8.0

Application Framework

- Single integrated application with ISIS, ARES and 3D Viewer appearing as tabbed modules.
- Switch between tabs on a single monitor (e.g. laptop) or drag and drop tabs to view in separate windows.

Common Parts Database

- Unified database of all parts and elements in the current project.
- Enables automatic updating of data between Proteus modules (e.g. Schematic and PCB)

Live Netlisting

- A live netlist is now maintained and accessible throughout the system.
- Enables changes on the schematic to be reflected across PCB, BOM and Design Explorer in real time.

3D Viewer

- Now supports DirectX (as well as OpenGL) and runs multi-threaded.
- Includes live update mechanism so changes made in ARES are reflected in the 3D Viewer.

Bill of Materials

- Completely new BOM module with PDF, HTML and Excel output.
- New Property Editor grid allowing you to easily add data to the report.

VSM Studio

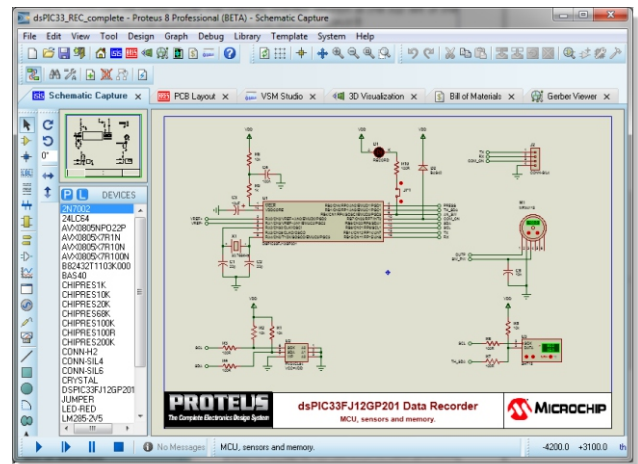
- Integrated IDE for Proteus VSM simulation and debugging.
- Automatically sets up compilers and debugs target firmware.

Overview

The main theme of the Proteus 8 release is integration. Development has therefore been focussed on taking the various discrete parts of an electronic design and coupling them together to achieve a better workflow. In order to achieve this, three major architectural changes were necessary; a unified application framework, a common database and a live netlist.

The Application Framework

Proteus 8 consists of a single application with many modules (ISIS, BOM, ARES, 3D Viewer, etc.). Modules open in tabs within the application window but can then be dragged and dropped to create additional windows and enable side-by-side viewing.



This allows you to not only work with ISIS and ARES in the design phase as you did in previous versions but also to split off other modules according to the work you are doing at a particular time. For example, ISIS and VSM Studio for debugging, ISIS and BOM for report generation, ARES and 3D Viewer for verification and so on.

Common Database & Live Netlisting

The common database and live netlisting features provide system wide access to the properties of the parts and the connectivity between them. Features like pinswap, gateswap and annotation are both automatic and bi-directional between schematic and PCB and connectivity changes on the schematic can be automatically reflected in any other module (BOM, Design Explorer, ARES).

These features also lay the foundation for a number of development projects such as design snippets which we plan to bring forth during the lifetime of Proteus 8.

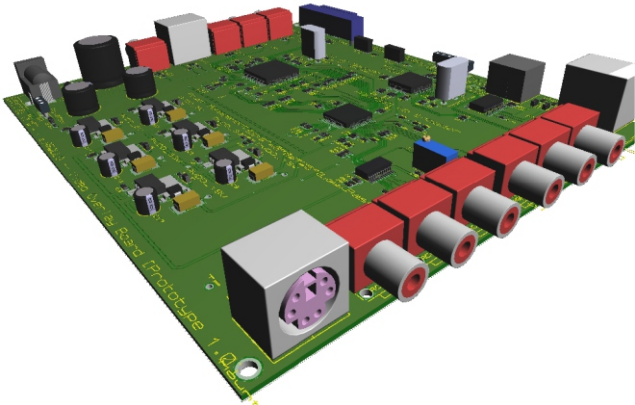
Proteus 8 stores the design (DSN), layout (LYT) and common database in a single project file (PDSR.J).

3D Visualisation

The 3D Viewer is a top level application module and launches as a new tab inside Proteus 8. Like other application modules you can drag and drop it into a new window if you want to view it alongside another module (e.g. ARES).

The rendering code for the 3D Viewer has been rewritten to support both DirectX and OpenGL and also to make it multi-threaded. Render times on machines with 4 or more cores can be more than halved when compared with Proteus 7.

These speed gains make possible an automatic update between ARES and the 3D Viewer such that changes to the PCB are automatically reflected in the 3D View.

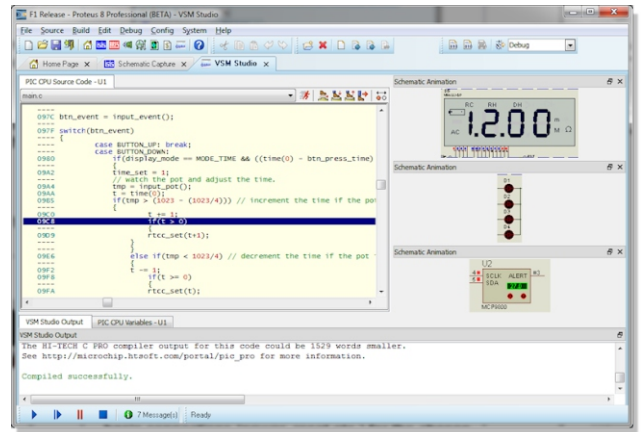
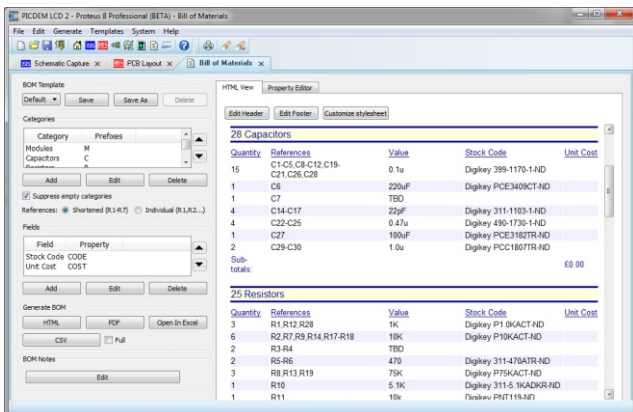


Bill of Materials

Proteus 8 includes a completely new Bill of Materials module. This operates in its own application window with a WYSIWYG view of the BOM. Changes to the schematic and/or formatting are reflected immediately and an integrated header/footer editor is also provided.

Further more, component properties can be added/removed or edited from within the BOM window. Any changes are automatically back-annotated onto the schematic. This is, of course, the most natural place to add stock/order codes, component costs and so forth.

The final output can be to print, HTML, Excel or PDF as you wish.



VSM Studio IDE

As with ISIS and ARES, the VSM Studio IDE is now an integral part of the single Proteus application. This has the following benefits

- Firmware is automatically loaded into the target processor(s) after a successful compile.
- The new project wizard can both place and wire up basic connections (power, reset etc.) for the chosen target processor
- Debugging can take place from within *either* the IDE or the schematic.

Additionally, Proteus 8 introduces the concept of 'Active Popups'. These are regions of the schematic (e.g. LCD display, or processor pins) that you wish to see whilst debugging the code. When debugging in VSM Studio, the Active Popups can be displayed and docked alongside the source code, variables and memory windows. This works especially well on laptops / single monitor setups where managing the popups whilst still being able to see the whole schematic was always something of a challenge.

Additional Framework Functionality

The Proteus 8 application includes a dedicated home page which, along with easy access to help and project launch, contains a news and information panel. The old Update Manager has been removed and new releases will now be displayed and made available for download directly from the home page.

A new crash dump reporting system has been added so that, in the event of a problem, you can choose to send detailed information to our servers. We plan to then use the information screen to report back to you when a solution or fix becomes available.

Additional Product Functionality

Many smaller features and improvements have been made across the full range of modules in Proteus 8. These are detailed in the migration guide and highlighted in the Getting Started Movies, both of which can be accessed from the application home page.

Upgrade Pricing from Version 7

Customers with a valid USC will receive Proteus 8 at no added cost.

While Proteus 8 is in Beta customers with a lapsed USC can renew at Proteus 7 pricing.

Proteus 7 pricing is also currently available for adding new modules or additional seats to your license.

Labcenter Electronics Ltd. Head Office
 53-55 Main Street, Grassington, BD23 5AA, United Kingdom.
 Tel: (+44) 1756 753440, Fax: (+44) 1756 752857
 Web: www.labcenter.com, Email: info@labcenter.com.

Labcenter Electronics Ltd. USA Office
 411 Queen Street, Suite 201, Newmarket, Ontario, Canada, L3Y 2G9
 Toll Free: (+1) 866-499-8184, Fax: (+1) 905-898-0683
 Web: www.labcenter.com, Email: info@labcenter.com